

1724 Everglades Drive Forney TX,
75126

Active
Jun 2022

SQUARE FT.
3,135 sq. ft. **PRICE**
\$587,000

GARAGE
 2 **STORIES**
 2

BEDROOMS
 5 **BATHS**

3 Baths | 1 Half Baths



WELCOME TO The Caldwell

Beautiful new Ashton Woods home only 22 miles to downtown Dallas located within the amenity rich, master planned community of Gateway Parks in Forney. This timeless premium collection home features outdoor covered patios. Situated on a 60' wide homesite, this gorgeous brick exterior home has charming wood window shutters outside and luxury whitefill oak vinyl upgraded flooring inside. This home offers a formal dining room which provides abundant extra seating for gatherings with family and friends. The family-kitchen-dining area is a great entertaining space and is designed beautifully with a family room 3x6 arctic white ceramic tile gas fireplace with a floating mantle, a ceiling fan, spacious bar top island, a walk-in storage pantry, silestone white arabesque Quartz solid surface countertops, satin nickel pendant lighting, pure white 42 inch shaker cabinets, a pull-out waste basket, spot resistant stainless Moen faucet, Energy Star Whirlpool stainless steel gas appliances with a built-in oven and microwave, and a single bowl undermount sink. The primary suite, perfectly placed at the back of the home, features a ceiling fan, double sink vanity, garden tub, ceramic tile shower with glass enclosure, ceramic tile flooring, upgraded lighting, Moen faucets and a grand walk-in closet. The staircase leads to the second-floor bedrooms, bathrooms with ceramic tile flooring, ceramic tile shower/tub surrounds, Moen faucets, upgraded fixtures, game room, and flex room. All bedrooms have a walk-in closet including the grand flex room! This home also has a 2-car garage with opener, fully fenced in private back yard, full sprinkler system, full gutter system, smart home wiring, Ring doorbell, full landscaping package, 16 SEER hvac, new home warranty, brushed nickel hardware, full gutters, 8ft front door, ceramic tile flooring in baths/utility, garage door opener and more.

About Gateway Parks 60s

Now Selling! Introducing the newest Ashton Woods' master-planned community, Gateway Parks, located just 22 miles from downtown Dallas, between US80 and I-20, in Forney, Texas. New homes on 60ft wide single family home sites with fully fenced in yards. Gateway Parks will connect with Gateway Marketplace, an expansive 2,000-acre development with future highlights such as fine dining, shopping and retail, offices, entertainment venues, schools, and more. Discover the beautiful homes within this close-knit community and fun-filled amenities for the entire family. You'll love the resort-style amenity center with its own clubhouse, fitness area and splash pad and another resort-style pool. Throughout the community you'll find a system of scenic walking trails, parks, an outdoor pavilion and picnic areas, event lawn, greenbelts, open spaces, parks, and so much more. Here, at Gateway Parks, you can choose from a variety of home floorplans that fit you and your family's lifestyle. Then, add your own personalized touches through refined Collections. Just choose the Collection that best reflects your style and the extraordinary life you live. It's that simple. With Ashton Woods Collections, your home's design isn't just beautiful – it's simply exceptional. Together, we'll create a home that's a reflection of you and your family's personal sense of style. Whether inspired by the fun-filled amenities or the close-knit community feel, you'll love the possibilities at Gateway Parks.



SQUARE FT.
3,135 sq. ft.

PRICE
\$587,000

GARAGE
 2

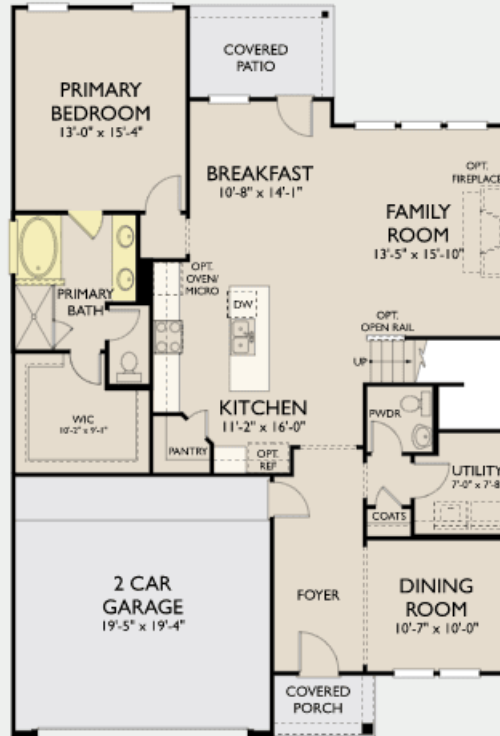
STORIES
 2

BEDROOMS
 5

BATHS
 3

ACTIVE
Jun 2022

First Floor C



Second Floor C



© 2019 Ashton Woods Homes. Ashton Woods Homes reserves the right to change plans, specifications and pricing without notice in its sole discretion. Square footage is approximate and floorplans shown are representative of actual floorplans. Window, floor and ceiling elevations are approximate, subject to change without prior notice or obligation, may not be updated on the website, and may vary by plan elevation and/or community. Special wall and window treatments, upgraded flooring, fireplace surrounds, landscape and other features in and around the model homes are designer suggestions and not included in the sales price. All renderings, color schemes, floor plans, maps and displays are artists' conceptions and are not intended to be an actual depiction of the home or its surroundings. Basement options are available subject to site conditions. Home site premiums may apply. While we endeavor to display current and accurate information, we make no representations or warranties regarding the information set forth herein and, without limiting the foregoing, are not responsible for any information being out of date or inaccurate, or for any typographical errors. Please see Sales Representative for additional information, including current floor plans. This is not an offer to sell real estate, or solicitation to buy real estate, in any jurisdiction where prohibited by law or in any jurisdiction where prior registration is required, including New York and New Jersey.