



1828 Lockhart Drive Forney TX,
75126

Active
Aug 2022

SQUARE FT.
3,103 sq. ft. **PRICE**
\$458,000

GARAGE
 2 **STORIES**
 2

BEDROOMS
 5 **BATHS**
 3



WELCOME TO The Caldwell

Beautiful new Ashton Woods home only 22 miles from the Dallas-Fort Worth Metroplex, and located within the amenity rich, master planned community of Gateway Parks in Forney. With an all-brick exterior, wood window shutters, and a covered front porch outside and luxury ripped pine vinyl flooring, charcoal quartz kitchen countertops, and the rockwell signature collection inside, this new home is truly designed beautifully inside and out! A quiet study, with double French doors, is perfectly placed at the front of the home. The gourmet kitchen, at the heart of the home, has upscale finishes like an eat-in island, Whirlpool stainless steel gas appliances with a built-in microwave and oven, a pull-out waste basket, pure white shaker cabinets, a matte black Moen faucet, 2x5 picket Santorini backsplash tile, black pendant lighting, a single bowl undermount sink, and a walk-in storage pantry. The kitchen overlooks the gorgeous family room fireplace outfitted in Santorini tile and a floating mantle, and the breakfast area. The primary suite is expertly designed with a double sink vanity, 12x24 gray floor tile, shower with a rubbed bronze frame, bathtub, and a large walk-in closet. At the top of the open staircase with metal balusters is an expansive game room, four secondary bedrooms, 2 bathrooms, and a flex room! The flex room would be a great additional office space or homework area! All bedrooms have their own walk-in closet including the flex room! Welcome Home!

About Gateway Parks 60s

Now Selling! Introducing the newest Ashton Woods' master-planned community, Gateway Parks, located just 22 miles from the Dallas-Fort Worth Metroplex, between US80 and I-20, in Forney, Texas. Gateway Parks will connect with Gateway Marketplace, an expansive 2,000-acre development with future highlights such as fine dining, shopping and retail, offices, entertainment venues, schools, and more. Discover the beautiful homes within this close-knit community and fun-filled amenities for the entire family. You'll love the resort-style amenity center with its own clubhouse and splash pad and another resort-style pool. Throughout the community you'll find a system of scenic walking trails, parks, an outdoor pavilion and picnic areas, event lawn, greenbelts, open spaces, parks, and so much more. Here, at Gateway Parks, you can choose from a variety of home floorplans that fit you and your family's lifestyle. Then, add your own personalized touches through refined Collections. Just choose the Collection that best reflects your style and the extraordinary life you live. It's that simple. With Ashton Woods Collections, your home's design isn't just beautiful – it's simply exceptional. Together, we'll create a home that's a reflection of you and your family's personal sense of style. Whether inspired by the fun-filled amenities or the close-knit community feel, you'll love the possibilities at Gateway Parks.



SQUARE FT.
3,103 sq. ft.

PRICE
\$458,000

GARAGE
 2

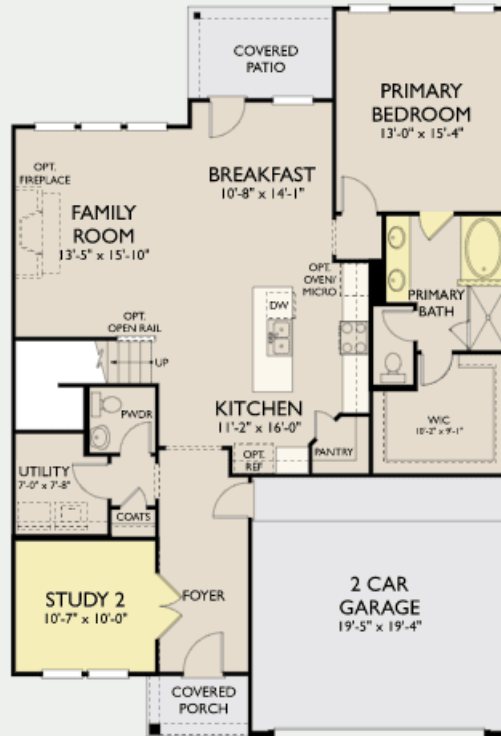
STORIES
 2

BEDROOMS
 5

BATHS
 3

ACTIVE
Aug 2022

First Floor



Second Floor



© 2019 Ashton Woods Homes. Ashton Woods Homes reserves the right to change plans, specifications and pricing without notice in its sole discretion. Square footage is approximate and floorplans shown are representative of actual floorplans. Window, floor and ceiling elevations are approximate, subject to change without prior notice or obligation, may not be updated on the website, and may vary by plan elevation and/or community. Special wall and window treatments, upgraded flooring, fireplace surrounds, landscape and other features in and around the model homes are designer suggestions and not included in the sales price. All renderings, color schemes, floor plans, maps and displays are artists' conceptions and are not intended to be an actual depiction of the home or its surroundings. Basement options are available subject to site conditions. Home site premiums may apply. While we endeavor to display current and accurate information, we make no representations or warranties regarding the information set forth herein and, without limiting the foregoing, are not responsible for any information being out of date or inaccurate, or for any typographical errors. Please see Sales Representative for additional information, including current floor plans. This is not an offer to sell real estate, or solicitation to buy real estate, in any jurisdiction where prohibited by law or in any jurisdiction where prior registration is required, including New York and New Jersey.