

Ashton Woods

3215 Switch Street Sachse TX,
75048

Active
Feb 2023

SQUARE FT.
1,950 sq. ft.

PRICE
\$460,000

GARAGE



2

STORIES



2

BEDROOMS



3

BATHS



2 Baths | 1 Half Baths



WELCOME TO The Brown

Gorgeous new Ashton Woods townhome minutes to President George Bush Turnpike 161, US-75, and nestled in the perfect Northeast location 20 miles to Dallas in Sachse TX. The brick and stone Roosevelt signature collection Brown townhome design has a modern window awning and exterior wood accent corbels. Durable upgraded luxury vinyl plank flooring flows throughout the main floor of this open floorplan townhome. Entertain family and friends while cooking in the gourmet kitchen complete with ebony 42 inch shaker cabinets, a pull-out waste basket, silestone desert silver solid surface quartz countertops, a matte black Moen faucet, brass with bronze pendant lights, a walk-in pantry, an eat-in island, mosaic white ceramic tile backsplash, Whirlpool stainless steel appliances with a built-in oven and microwave, and an undermount stainless steel single bowl sink. At the top of the open staircase with metal balusters is a spacious loft that could be used as a home office space. The primary suite is designed with double-sink vanity, ceramic tile shower with glass enclosure, Moen faucets, lighting package, ceramic tile flooring, hardware package, large linen closet, and a walk-in closet. Two secondary bedrooms are on the other side of the loft with full bathroom featuring ceramic tile flooring, ceramic tile tub surround, Moen faucets, lighting package, hardware package and cabinet. The utility room with ceramic tile flooring is perfectly placed near all the bedrooms on the second floor. This home features great energy efficient upgrades like Energy Star appliances, energy efficient dual pane windows, and LED lighting. Additionally, this beautifully designed and low maintenance townhome has matte black plumbing fixtures and door hardware, ceramic tile flooring in all baths and the utility room, garage door opener, gutters, 8ft doors on the first floor, smart home, new home warranty, Ring doorbell and Brilliant panel, landscape package, and Moen faucets.

About The Station - Townhomes

Conveniently located on the President George Bush Turnpike 161, between Miles Road and Merritt Road, you'll find The Station, a new residential and entertainment district in Sachse, Texas only 25 minutes to downtown Dallas and 22 miles to Legacy West/Dallas North Tollway. Ashton Woods features luxury Townhomes with quick and easy access to shopping, dining, large employment campuses and schools. The district creates a harmonious balance between work, play, and life –encompassing everything from residential communities and office spaces to restaurants and entertainment offerings. Beyond just a place, The Station is a feeling – it's the warmth from gathering with friends for shopping or a show; it's the satisfaction from enjoying a delicious meal; it's the joy of savored moments with family and friends for a day well spent. And, here, you'll have opportunities to create a new home that reflects your passions and personal tastes through refined Collections. Just choose the Collection that best reflects your style and the extraordinary life you live. It's that simple. With The Ashton Woods Collections, your home's design isn't just beautiful – it's simply exceptional. Here, together, we'll help you create a home that's a reflection of your personal sense of style. At The Station by Ashton Woods, you'll love the possibilities.



CALL TO LEARN MORE AND REQUEST A TOUR TODAY

972-351-8891

ASHTONWOODS.COM

SQUARE FT.
1,950 sq. ft.

PRICE
\$460,000

GARAGE
 2

STORIES
 2

BEDROOMS
 3

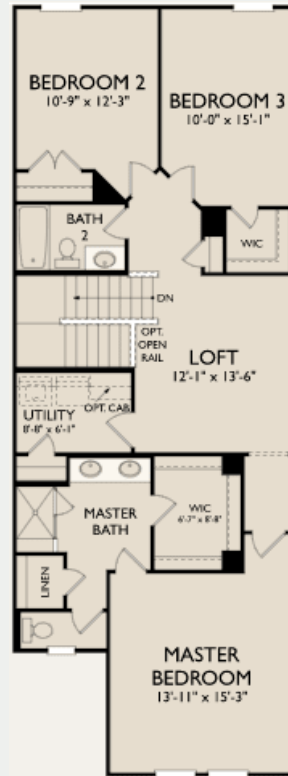
BATHS
 2

ACTIVE
Feb 2023

First Floor



Second Floor



© 2022 Ashton Woods Homes. Ashton Woods Homes reserves the right to change plans, specifications, dimensions, designs, elevations and pricing without notice in its sole discretion. Stated dimensions and square footage are approximate and are not representative of a home's actual size or net useable square footage which may be less than the estimated square footage. Floorplans and elevations shown may not accurately represent the actual condition of a home as constructed, and may contain options which are not available on all models. Window, floor and ceiling elevations are approximate, subject to change without prior notice or obligation, may not be updated on the website, and may vary by plan elevation and/or community. Special wall and window treatments, upgraded flooring, fireplace surrounds, landscape and other features in and around the model homes are designer suggestions and not included in the sales price. All renderings, color schemes, floor plans, maps and displays are artists' conceptions and are not intended to be an actual depiction of the home or its surroundings. Basement options are available subject to site conditions. Garage or bay sizes may vary from home to home and may not accommodate all vehicles. Home site premiums may apply. While we endeavor to display current and accurate information, we make no representations or warranties regarding the information set forth herein and, without limiting the foregoing, are not responsible for any information being out of date or inaccurate, or for any typographical errors. Please see Sales Representative for additional information, including current floor plans. This is not an offer to sell real estate, or solicitation to buy real estate, in any jurisdiction where prohibited by law or in any jurisdiction where prior registration is required, including New York and New Jersey.