

7626 Hartford Den San
 Antonio, TX 78253

Available
 December 2019

SQUARE FT. **PRICE**
 1,798 sq. ft. \$289,990

GARAGE **STORIES**
 2  1

BEDROOMS **BATHS**
 3  2



WELCOME TO The Victoria

This charming one-story home features a gourmet kitchen with built in stainless-steel appliances, gas cook top, granite counter tops and center island with pendant lights. Beautiful wood flooring in main living areas. Designer tile in baths and utility room. Master suite features private bath with a spa-like, over sized, mud set shower, double vanities and a walk-in closet. The home also includes a covered patio perfect for outdoor entertaining.

About Waterford Park

Situated in the foothills of the picturesque Texas Hill Country, Waterford Park offers quiet country living with close, easy access to Government Canyon State Natural Area, shopping, dining, golf, Sea World, Lackland AFB and numerous major employers. Together, we'll create a home that's a true reflection of your style and your passions. Our design experts will collaborate with you to weave your vision into a personalized design solution. Whether inspired by the sweeping vistas of Hill Country or by your own personal sense of style, at Waterford Park, you'll love the possibilities.



SQUARE FT.
1,798 sq. ft.

GARAGE



STORIES



BEDROOMS



BATHS

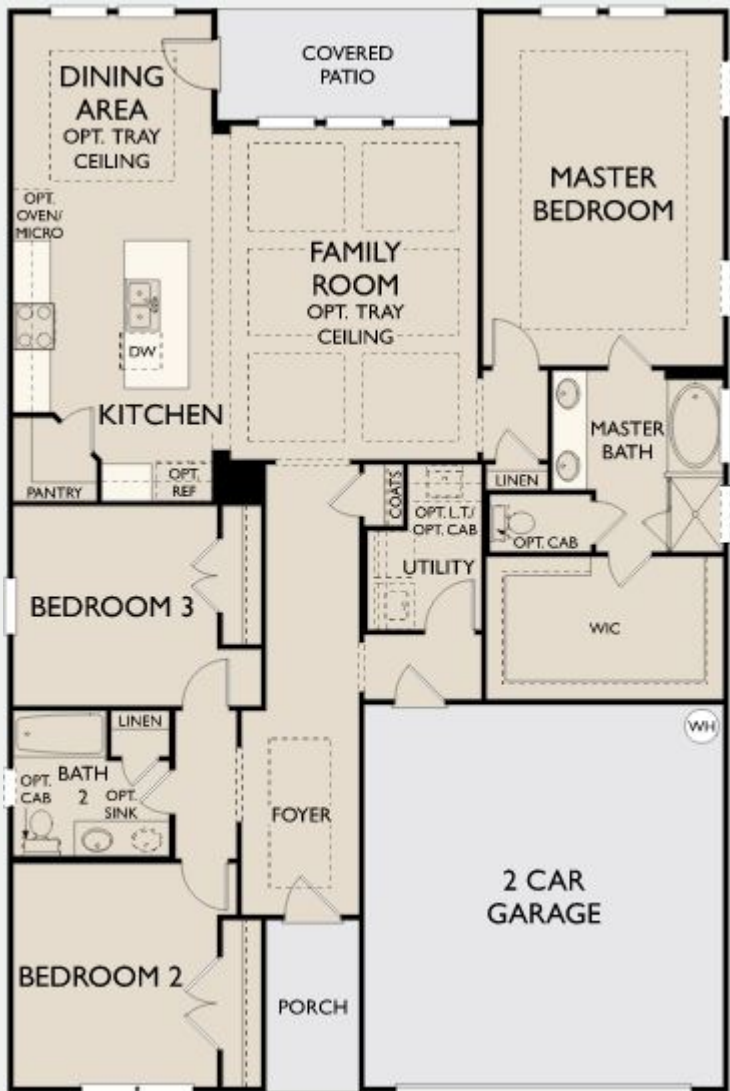


PRICE
\$289,990

AVAILABLE

DECEMBER 2019

First Floor A



© 2019 Ashton Woods Homes. Ashton Woods Homes reserves the right to change plans, specifications and pricing without notice in its sole discretion. Square footage is approximate and floorplans shown are representative of actual floorplans.. Window, floor and ceiling elevations are approximate, subject to change without prior notice or obligation, may not be updated on the website, and may vary by plan elevation and/or community. Special wall and window treatments, upgraded flooring, fireplace surrounds, landscape and other features in and around the model homes are designer suggestions and not included in the sales price. All renderings, color schemes, floor plans, maps and displays are artists' conceptions and are not intended to be an actual depiction of the home or its surroundings. Basement options are available subject to site conditions.

Home site premiums may apply. While we endeavor to display current and accurate information, we make no representations or warranties regarding the information set forth herein and, without limiting the foregoing, are not responsible for any information being out of date or inaccurate, or for any typographical errors. Please see Sales Representative for additional information, including current floor plans. This is not an offer to sell real estate, or solicitation to buy real estate, in any jurisdiction where prohibited by law or in any jurisdiction where prior registration is required, including New York and New Jersey.