



318 Bright Leaf Loop,  
Homesite 293  
Summerville, SC 29486

## Ready Now

**SQUARE FT.**  
2,009 sq. ft.     **PRICE**  
\$374,450

**GARAGE**  
 2     **STORIES**  
 2

**BEDROOMS**  
 3     **BATHS**  
 2.5

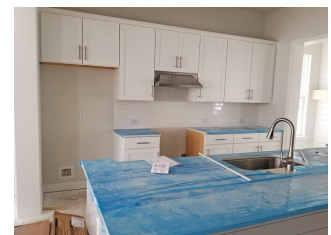


## WELCOME TO The Berkeley

This home faces a pocket park and its large porch is the perfect location for a couple of rocking chairs or porch swing. Open and inviting, this home has a large center kitchen with stunning white cabinets, white subway tile, and an 11-foot island. The generous dining space is perfect for the farm table on your Pinterest board. A 22'x10' rear covered porch provides a gathering spot for the perfect cup of Joe. The spacious master suite comes with a tiled shower, linen closet, and a large walk-in closet. A classic, soft grey and white interior with a touch of modern farmhouse is perfect for this Berkeley design.

### About Nexton

Welcome to Nexton, where it all comes together. This master planned community in Summerville is a smart, vibrant blend of businesses, schools, new homes, apartments, shops and eateries. Connected to each other by trails, parks and nature, and connected to the world through leading-edge technology. Here, you'll find exceptionally designed homes with lowcountry style and modern comforts. Located twenty-five miles from historic Charleston and five miles from downtown Summerville, at Nexton you'll love the possibilities.



© 2019 Ashton Woods Homes. Ashton Woods Homes reserves the right to change plans, specifications and pricing without notice in its sole discretion. Square footage is approximate and floorplans shown are representative of actual floorplans.. Window, floor and ceiling elevations are approximate, subject to change without prior notice or obligation, may not be updated on the website, and may vary by plan elevation and/or community. Special wall and window treatments, upgraded flooring, fireplace surrounds, landscape and other features in and around the model homes are designer suggestions and not included in the sales price. All renderings, color schemes, floor plans, maps and displays are artists' conceptions and are not intended to be an actual depiction of the home or its surroundings. Basement options are available subject to site conditions. Home site premiums may apply. While we endeavor to display current and accurate information, we make no representations or warranties regarding the information set forth herein and, without limiting the foregoing, are not responsible for any information being out of date or inaccurate, or for any typographical errors. Please see Sales Representative for additional information, including current floor plans. This is not an offer to sell real estate, or solicitation to buy real estate, in any jurisdiction where prohibited by law or in any jurisdiction where prior registration is required, including New York and New Jersey.