



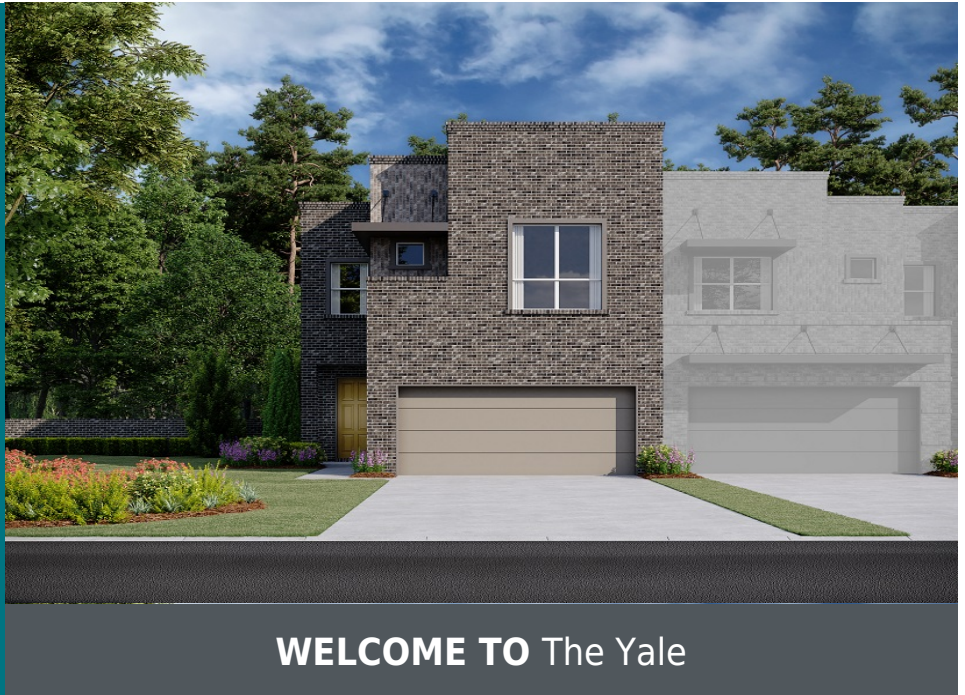
1082 Maverick Drive  
Allen, TX 75013

**Available**  
April 2020

**SQUARE FT.**  
1,950 sq. ft.     **PRICE**  
\$370,000

**GARAGE**     **STORIES**  
 2      2

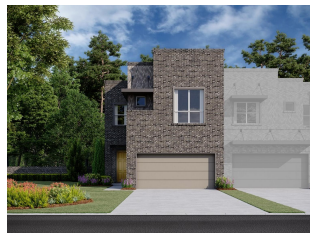
**BEDROOMS**     **BATHS**  
 3      2.5



Luxurious new townhome just 11 miles from Legacy West/Dallas North Tollway, minutes from US-75, 161, 121 and within walking distance to shopping and dining at the Shops at Watters Creek! This townhome is perfect for a buyer wanting both high-end and contemporary finishes. The home features Energy Star Stainless Steel Whirlpool appliances, upgraded cabinets, tile backsplash, upgraded flooring, walk in master shower with tile surround and glass door, walk in closets, dual sinks in master bath, landscaping package, covered patio with yard, sprinkler system, gutters, garage door opener, open stair railing, mud room, powder bath on main level, 10' ceilings, ceiling fans, energy efficient lighting, upgraded fixtures and thousands of options and upgrades. This new end unit townhome offers an open living-kitchen-dining layout with Maestro Quartz countertops, an eat-in island, a storage closet under the stairs, hardwood flooring, a mud room and a 2-car garage. The second floor features a loft, utility room and three spacious bedrooms. Enjoy the seasons cooler temperatures from your backyard covered patio!

### About Montgomery Ridge Townhomes

NOW SELLING! Tucked in a superior Allen location just south of Bethany Drive, you'll find Montgomery Ridge. Now offering low-maintenance townhomes with fenced-in backyards. Enjoy life in one of the Metroplex's most vibrant walk-and-play destinations. Leave the car at home and take a short stroll to the many shopping, dining and entertainment venues offered nearby. The area is a business hub as well, giving many residents a short commute and more time to enjoy their homes. Here together, we'll create your home as a true reflection of your style and your passions. At Montgomery Ridge, you'll love the possibilities.



**SQUARE FT.**  
1,950 sq. ft.

**GARAGE**



**STORIES**



**BEDROOMS**



**BATHS**

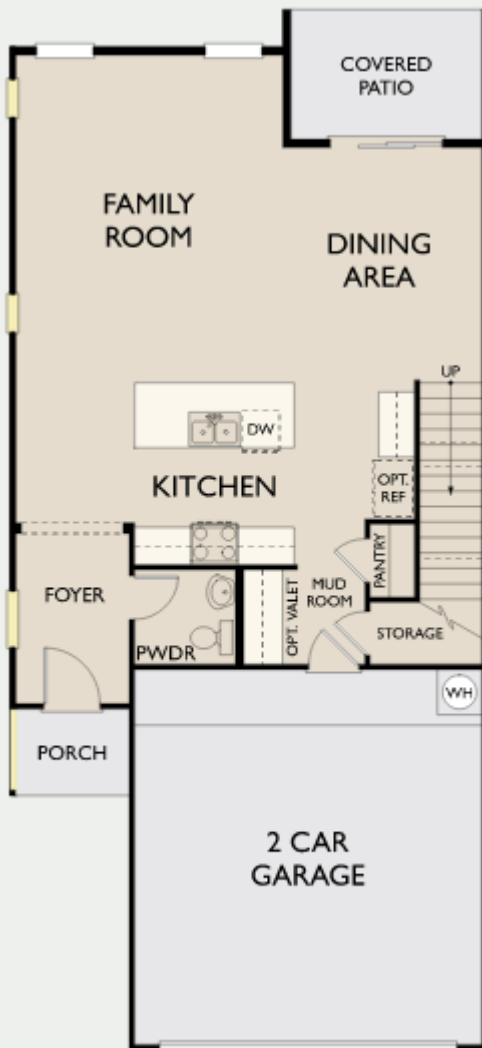


**PRICE**  
\$370,000

**AVAILABLE**

**APRIL 2020**

### First Floor B



### Second Floor B



© 2019 Ashton Woods Homes. Ashton Woods Homes reserves the right to change plans, specifications and pricing without notice in its sole discretion. Square footage is approximate and floorplans shown are representative of actual floorplans. Window, floor and ceiling elevations are approximate, subject to change without prior notice or obligation, may not be updated on the website, and may vary by plan elevation and/or community. Special wall and window treatments, upgraded flooring, fireplace surrounds, landscape and other features in and around the model homes are designer suggestions and not included in the sales price. All renderings, color schemes, floor plans, maps and displays are artists' conceptions and are not intended to be an actual depiction of the home or its surroundings. Basement options are available subject to site conditions. Home site premiums may apply. While we endeavor to display current and accurate information, we make no representations or warranties regarding the information set forth herein and, without limiting the foregoing, are not responsible for any information being out of date or inaccurate, or for any typographical errors. Please see Sales Representative for additional information, including current floor plans. This is not an offer to sell real estate, or solicitation to buy real estate, in any jurisdiction where prohibited by law or in any jurisdiction where prior registration is required, including New York and New Jersey.