



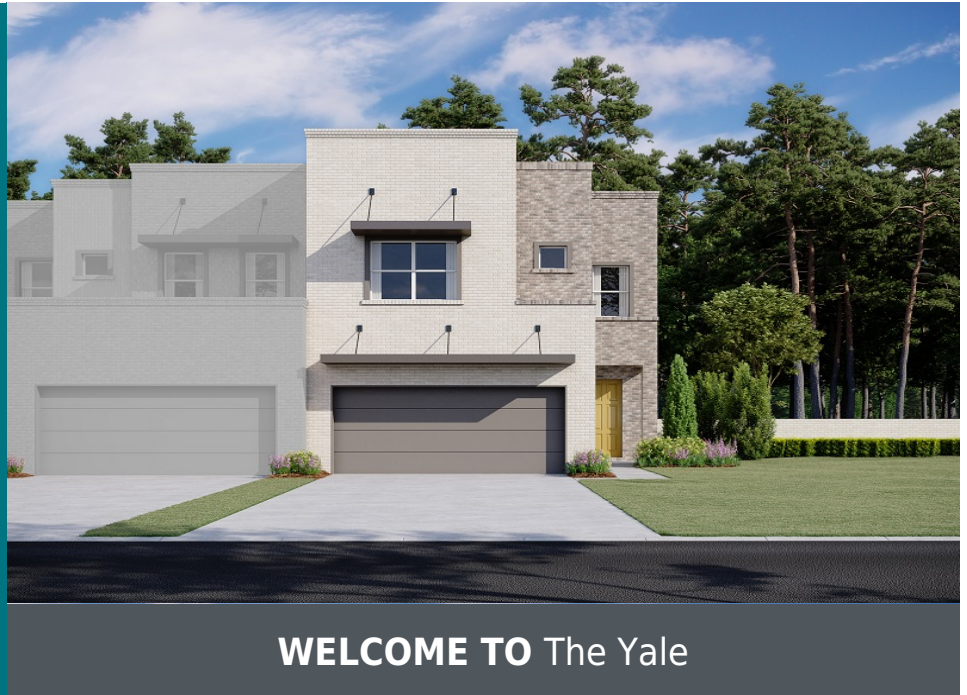
1062 Maverick Drive
Allen, TX 75013

Available
April 2020

SQUARE FT.
1,950 sq. ft. **PRICE**
\$357,000

GARAGE **STORIES**
 2  2

BEDROOMS **BATHS**
 3  2.5



WELCOME TO The Yale

Luxurious new townhome just 11 miles from Legacy West/Dallas North Tollway, minutes from US-75, SRT 121, PGBT161 and within walking distance to shopping and dining at the Shops at Watters Creek! This contemporary townhome is perfect for buyers that enjoy high-end finishes like hardwood flooring and Quartz countertops but don't have time for too much outdoor maintenance. The Yale floorplan has a cozy foyer, mud room, a storage closet under the stairs and an open family-kitchen-dining area. The dining area is right next to the backyard patio so you can easily enjoy meals outside or inside! The second-floor bedrooms are spacious and just across the loft from the master suite. An upstairs utility room near all the bedrooms makes laundry day easier! The new home features thousands of options and upgrades such as: Energy Star Stainless Steel Appliances, upgraded countertops, upgraded cabinets, tile backsplash, mud room, open stair railing, dual sinks in the master bath, walk in closets, walk in shower with upgraded tile and glass surround, upgraded flooring, upgraded fixtures and faucets, sprinkler system, landscape package, low voltage wiring, gutters and so much more.

About Montgomery Ridge Townhomes

NOW SELLING! Tucked in a superior Allen location just south of Bethany Drive, you'll find Montgomery Ridge. Now offering low-maintenance townhomes with fenced-in backyards. Enjoy life in one of the Metroplex's most vibrant walk-and-play destinations. Leave the car at home and take a short stroll to the many shopping, dining and entertainment venues offered nearby. The area is a business hub as well, giving many residents a short commute and more time to enjoy their homes. Here together, we'll create your home as a true reflection of your style and your passions. At Montgomery Ridge, you'll love the possibilities.



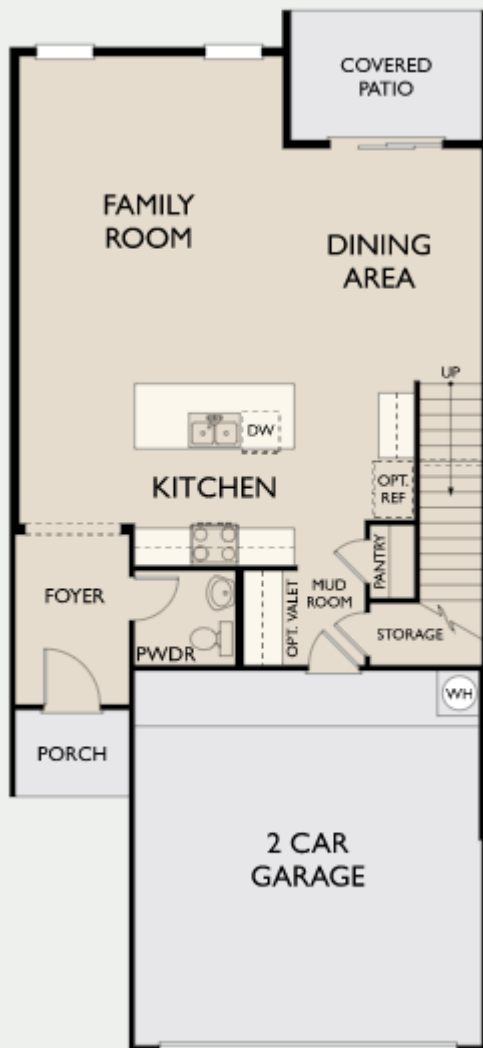
SQUARE FT.
1,950 sq. ft.



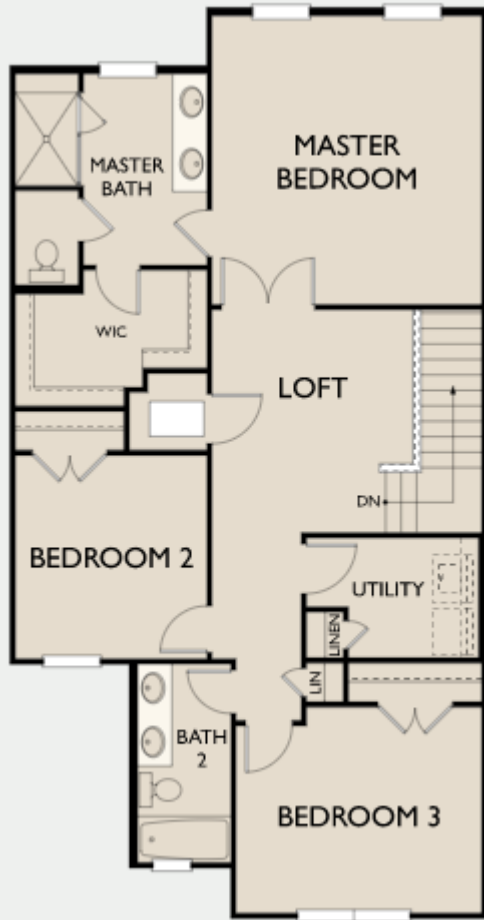
PRICE
\$357,000

AVAILABLE
APRIL 2020

First Floor A



Second Floor A



© 2019 Ashton Woods Homes. Ashton Woods Homes reserves the right to change plans, specifications and pricing without notice in its sole discretion. Square footage is approximate and floorplans shown are representative of actual floorplans. Window, floor and ceiling elevations are approximate, subject to change without prior notice or obligation, may not be updated on the website, and may vary by plan elevation and/or community. Special wall and window treatments, upgraded flooring, fireplace surrounds, landscape and other features in and around the model homes are designer suggestions and not included in the sales price. All renderings, color schemes, floor plans, maps and displays are artists' conceptions and are not intended to be an actual depiction of the home or its surroundings. Basement options are available subject to site conditions. Home site premiums may apply. While we endeavor to display current and accurate information, we make no representations or warranties regarding the information set forth herein and, without limiting the foregoing, are not responsible for any information being out of date or inaccurate, or for any typographical errors. Please see Sales Representative for additional information, including current floor plans. This is not an offer to sell real estate, or solicitation to buy real estate, in any jurisdiction where prohibited by law or in any jurisdiction where prior registration is required, including New York and New Jersey.