

ASHTON **AW** WOODS.

9826 Marbella Drive
Bradenton, FL 34211

Available
March 2020

SQUARE FT.
1,981 sq. ft. **PRICE**
\$335,990

GARAGE
 2 **STORIES**
 1

BEDROOMS
 4 **BATHS**
 2



WELCOME TO The Lassen

Was \$410,952, Now \$389,990

Welcome to Rosedale, gorgeous brand-new homes by Ashton Woods in the Lakewood Ranch area. The options in this home have been meticulously selected by interior designers to ensure the latest in design. Inside you'll find a sunny bright, open kitchen and living room with plenty of upgrades such as beautiful 42" white shaker style Wellborn kitchen cabinets, all stainless steel Whirlpool appliances including gas range, Shaw white tile backsplash, and enormous quartz counter-top island perfect for gatherings. Main living space features 6x36 Shaw wood look tile and the bedrooms feature upgraded Shaw stain resistant carpet for comfort. Other notable features include 4 spacious bedrooms, tray ceiling in master and family room, private laundry room, outdoor kitchen stub out for future outdoor kitchen, pre-wire for pool and spa with pump and electric heater for future pool, 8' interior doors, covered lanai and 10 year limited structural warranty! In this exclusive gated community, residents can enjoy community clubhouse, pool, tennis courts, fitness center, cable and internet included, lawn maintenance and a social membership to Rosedale Golf and Country club. PLUS NO CDD FEES! Make your appointment today!

About Rosedale

Come rediscover what inspired living can look like in a community filled with beautiful home design and brand-new, resort-style amenities, all surrounded by gorgeous, shimmering lakes. Set your early tee time on the championship golf course before joining the neighbors by the Junior Olympic-sized swimming pool. An afternoon of unwinding after a friendly game of tennis will always be waiting for you along with many social events at the completely renovated community clubhouse. With a short drive, you'll find upscale shopping and delightful dining. It's the ideal place to call home. Together, we'll create your home as a true reflection of your style and your passions. Our design experts will collaborate with you to weave your vision



CALL TO LEARN MORE AND REQUEST A TOUR TODAY

941-208-0686

ASHTONWOODS.COM

into a personalized design solution. Whether inspired by the sun-soaked culture of Sarasota or your own imagination, at Rosedale, you'll love the possibilities.

SQUARE FT.
1,981 sq. ft.

GARAGE



STORIES



BEDROOMS



BATHS

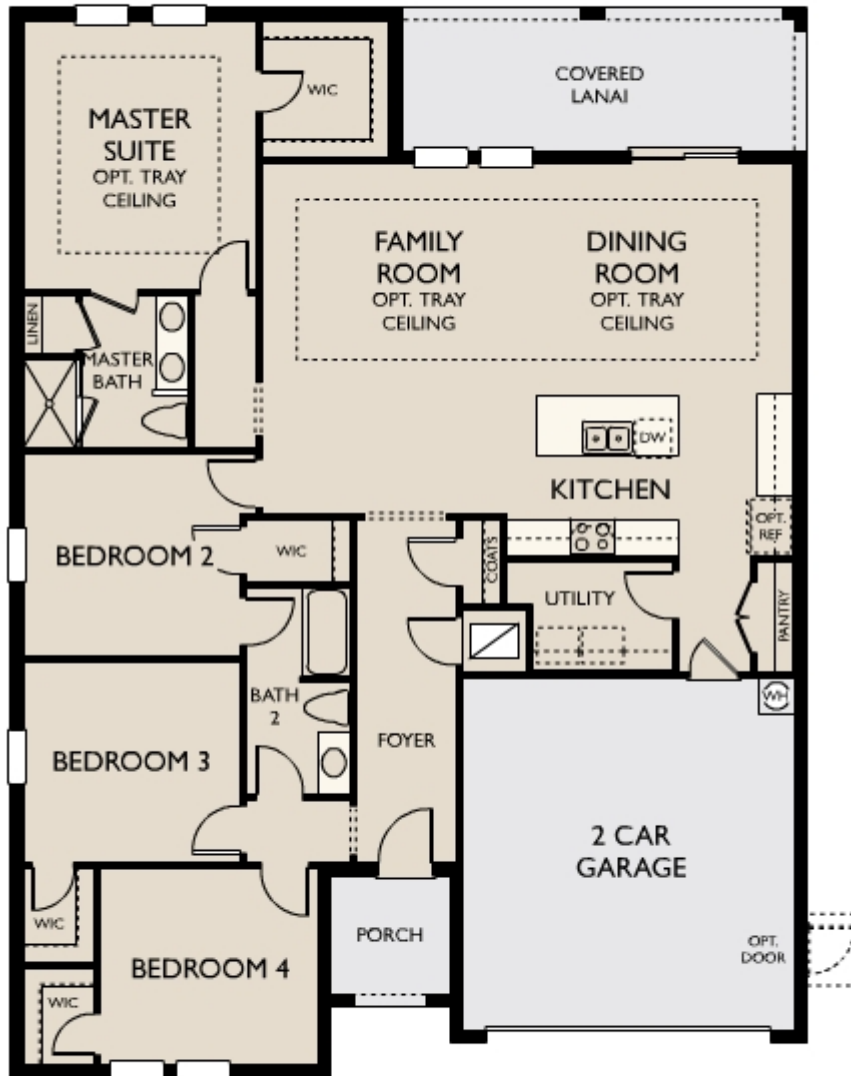


PRICE
\$335,990

AVAILABLE

MARCH 2020

First Floor A



© 2019 Ashton Woods Homes. Ashton Woods Homes reserves the right to change plans, specifications and pricing without notice in its sole discretion. Square footage is approximate and floorplans shown are representative of actual floorplans.. Window, floor and ceiling elevations are approximate, subject to change without prior notice or obligation, may not be updated on the website, and may vary by plan elevation and/or community. Special wall and window treatments, upgraded flooring, fireplace surrounds, landscape and other features in and around the model homes are designer suggestions and not included in the sales price. All renderings, color schemes, floor plans, maps and displays are artists' conceptions and are not intended to be an actual depiction of the home or its surroundings. Basement options are available subject to site conditions. Home site premiums may apply. While we endeavor to display current and accurate information, we make no representations or warranties regarding the information set forth herein and, without limiting the foregoing, are not responsible for any information being out of date or inaccurate, or for any

typographical errors. Please see Sales Representative for additional information, including current floor plans. This is not an offer to sell real estate, or solicitation to buy real estate, in any jurisdiction where prohibited by law or in any jurisdiction where prior registration is required, including New York and New Jersey.