

ASHTON **AW** WOODS.

268 Devin Place Atlanta,
GA 30305

Ready Now

SQUARE FT.
3,378 sq. ft.

PRICE
\$929,900

GARAGE
 2

STORIES
 3

BEDROOMS
 3

BATHS
 3.5



WELCOME TO The Parkland

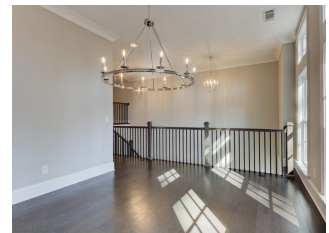
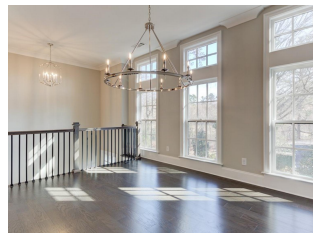
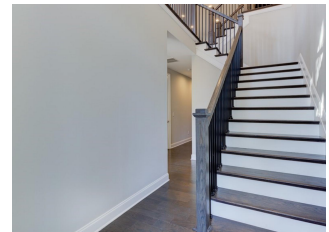
Hillgrove Homesite #17

GREAT NEW PRICE - FINAL HOMES

The "Parkland" is a luxury townhome overlooking Peachtree Hills Park, featuring a gourmet kitchen with quartz countertops and a large center island open to the family room. This home has three large bedrooms all with private baths, The main level has a covered deck with a Windor System, allowing you to bring the outside indoors. The exterior features all brick and stone with cast stone details.

About Hillgrove

Only 2 Homes Remain! In the heart of one of Atlanta's most conveniently located and cherished neighborhoods, Buckhead, you'll find the gated townhome community of Hillgrove. In this sophisticated part of the city, a short walk from your three-story townhome will take you to a neighborhood eatery or a peaceful park. And yet, you're just minutes from action-packed living and Atlanta's best theaters, museums, restaurants and sporting events, with easy access to all major highways. Experience the best of both city life and community life in a beautifully designed, elevator ready townhome we'll help you create. Enjoy lock and go low maintenance living at Hillgrove. Whether inspired by the art and culture of Atlanta or the historic homes of Buckhead, at Hillgrove, you'll love the possibilities.



CALL TO LEARN MORE AND REQUEST A TOUR TODAY

770-691-0818

ASHTONWOODS.COM

© 2019 Ashton Woods Homes. Ashton Woods Homes reserves the right to change plans, specifications and pricing without notice in its sole discretion. Square footage is approximate and floorplans shown are representative of actual floorplans.. Window, floor and ceiling elevations are approximate, subject to change without prior notice or obligation, may not be updated on the website, and may vary by plan elevation and/or community. Special wall and window treatments, upgraded flooring, fireplace surrounds, landscape and other features in and around the model homes are designer suggestions and not included in the sales price. All renderings, color schemes, floor plans, maps and displays are artists' conceptions and are not intended to be an actual depiction of the home or its surroundings. Basement options are available subject to site conditions. Home site premiums may apply. While we endeavor to display current and accurate information, we make no representations or warranties regarding the information set forth herein and, without limiting the foregoing, are not responsible for any information being out of date or inaccurate, or for any typographical errors. Please see Sales Representative for additional information, including current floor plans. This is not an offer to sell real estate, or solicitation to buy real estate, in any jurisdiction where prohibited by law or in any jurisdiction where prior registration is required, including New York and New Jersey.