

1253 Epping Lane - 53  
Atlanta, GA 30319

## Ready Now

**SQUARE FT.**  
970 sq. ft.     **PRICE**  
\$378,426

**GARAGE**  
 1     **STORIES**  
 2

**BEDROOMS**  
 1     **BATHS**  
 1.5



## WELCOME TO The Tchaikovsky

Halstead Homesite #53.

Bright, open and inviting, the Tchaikovsky features a wide open kitchen and living space on the main level, a beautiful, sunlit owner's suite with 10-foot ceilings and the laundry smartly located in the closet. Comes with an oversized, single-car garage with tons of storage.

### About Halstead Lofts

Now Open! Nestled in the heart of Brookhaven, just beyond the bustling streets of downtown Buckhead, you'll find the gated enclave of Halstead. In this premier location, you'll be within reach of the best of Atlanta. From the shops and restaurants of Dresden Drive to the peaceful oasis of Lenox Park, or all the possibilities of the Marta Station just walking distance from your front door, this exceptional location provides the access you're looking for and the privacy of a gated community. With green spaces inside and just outside the community, you'll enjoy true neighborhood lifestyle, with single-family homes, townhomes and lofts to fit your unique life. Whether inspired by this dynamic location or the history of this uniquely Southern city, at Halstead, you'll love the possibilities.



**SQUARE FT.**  
970 sq. ft.

**GARAGE**



**STORIES**



**BEDROOMS**



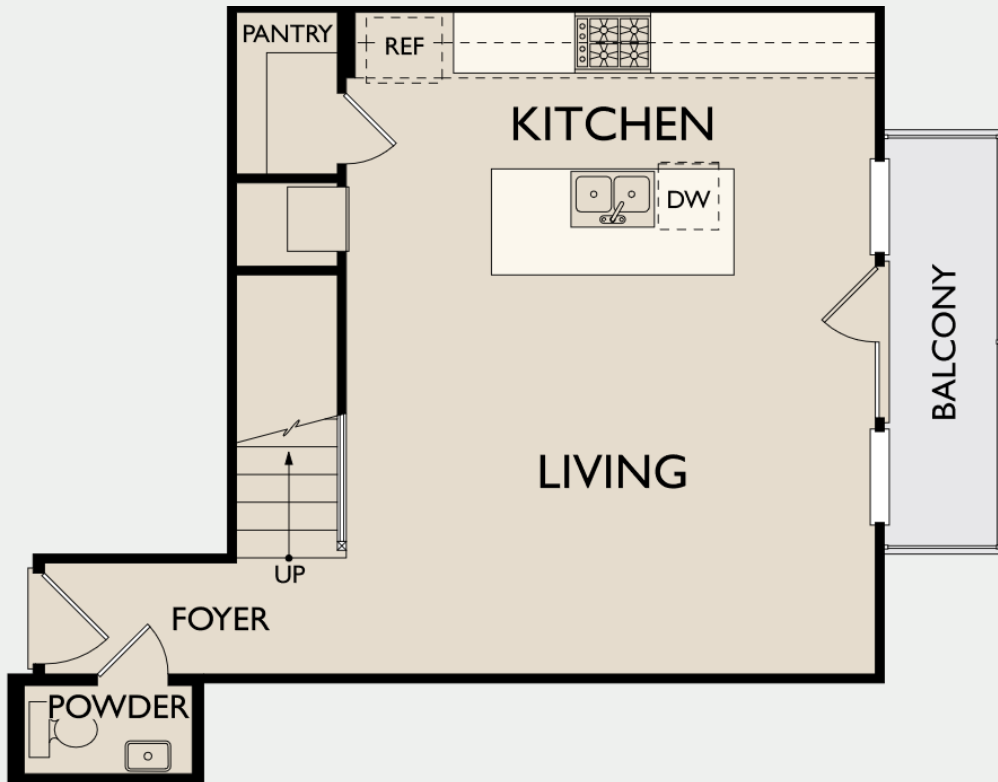
**BATHS**



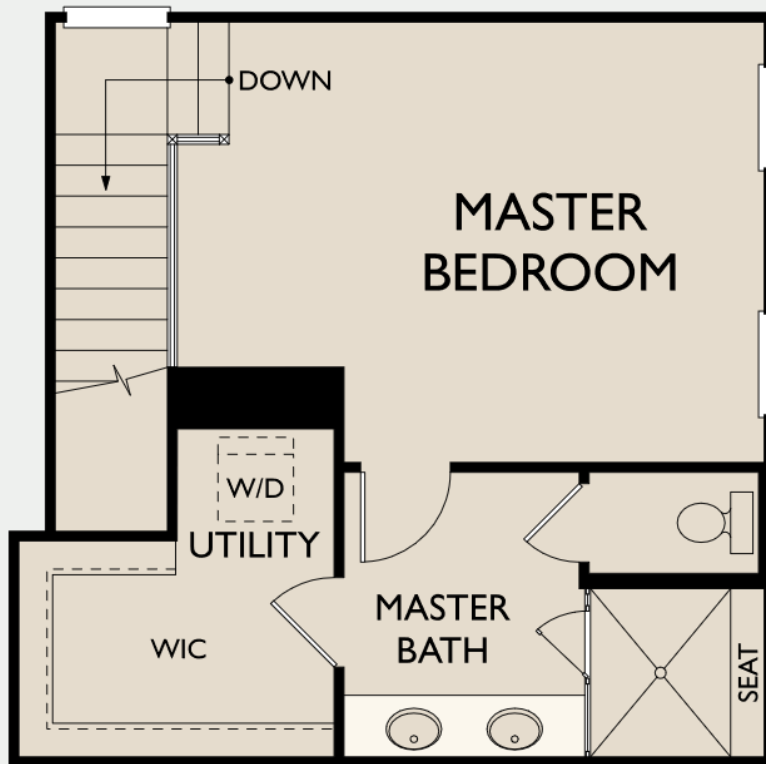
**PRICE**  
\$378,426

**READY NOW**

### First Floor A



### Second Floor A



© 2019 Ashton Woods Homes. Ashton Woods Homes reserves the right to change plans, specifications and pricing without notice in its sole discretion. Square footage is approximate and floorplans shown are representative of actual floorplans. Window, floor and ceiling elevations are approximate, subject to change without prior notice or obligation, may not be updated on the website, and may vary by plan elevation and/or community. Special wall and window treatments, upgraded flooring, fireplace surrounds, landscape and other features in and around the model homes are designer suggestions and not included in the sales price. All renderings, color schemes, floor plans, maps and displays are artists' conceptions and are not intended to be an actual depiction of the home or its surroundings. Basement options are available subject to site conditions. Home site premiums may apply. While we endeavor to display current and accurate information, we make no representations or warranties regarding the information set forth herein and, without limiting the foregoing, are not responsible for any information being out of date or inaccurate, or for any typographical errors. Please see Sales Representative for additional information, including current floor plans. This is not an offer to sell real estate, or solicitation to buy real estate, in any jurisdiction where prohibited by law or in any jurisdiction where prior registration is required, including New York and New Jersey.