

ASHTON **AW** WOODS.

801 Sienna Way
Summerville, SC 29486

Available
May 2021

SQUARE FT.
1,556 sq. ft. **PRICE**
\$331,380

GARAGE
 2 **STORIES**
 1

BEDROOMS
 3 **BATHS**
 2



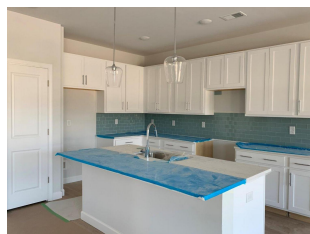
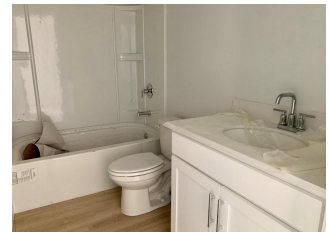
WELCOME TO The Pierce

Homesite #107

Make this one-story, ranch-style home on the pond yours! This Pierce plan will be ready for spring move-in and is conveniently located near the new community amenity center. In the chef's kitchen, you'll find white cabinetry, gas appliances and a quartz-topped island adjacent to the breakfast area. Retreat to the owner's suite with a walk-in tiled shower, dual vanities and dual walk-in closets. Luxury vinyl plank flooring is throughout the main living areas and the owner's suite. Enjoy scenic views from your living room, breakfast area and owner's suite. A rear covered patio offers outdoor living and pond views. Schedule a tour before this opportunity is gone!

About Woodwinds at Cane Bay

Welcome to Woodwinds at Cane Bay Plantation, an exciting, new community in Summerville. Experience the perfect blend of lowcountry living and convenience, with easy access to Charleston and all its work centers, including Medical University of South Carolina and Boeing. Spend your afternoons by the community pool, or bring the family to the playground. Enjoy close proximity to the shops, eateries and schools within this master-planned community. Here, you can choose from professionally curated interior designs and create a home that truly reflects your style and the extraordinary life you live. At Woodwinds at Cane Bay Plantation, you'll love the possibilities.



CALL TO LEARN MORE AND REQUEST A TOUR TODAY

843-474-6861

ASHTONWOODS.COM

© 2019 Ashton Woods Homes. Ashton Woods Homes reserves the right to change plans, specifications and pricing without notice in its sole discretion. Square footage is approximate and floorplans shown are representative of actual floorplans.. Window, floor and ceiling elevations are approximate, subject to change without prior notice or obligation, may not be updated on the website, and may vary by plan elevation and/or community. Special wall and window treatments, upgraded flooring, fireplace surrounds, landscape and other features in and around the model homes are designer suggestions and not included in the sales price. All renderings, color schemes, floor plans, maps and displays are artists' conceptions and are not intended to be an actual depiction of the home or its surroundings. Basement options are available subject to site conditions. Home site premiums may apply. While we endeavor to display current and accurate information, we make no representations or warranties regarding the information set forth herein and, without limiting the foregoing, are not responsible for any information being out of date or inaccurate, or for any typographical errors. Please see Sales Representative for additional information, including current floor plans. This is not an offer to sell real estate, or solicitation to buy real estate, in any jurisdiction where prohibited by law or in any jurisdiction where prior registration is required, including New York and New Jersey.