



ASHTON **AW** WOODS.

3916 Danube Lane
Atlanta, GA 30339

Available
February 2022

SQUARE FT.
2,309 sq. ft. **PRICE**
\$613,569

GARAGE
 2 **STORIES**
 3

BEDROOMS
 3 **BATHS**
 3.5



WELCOME TO The Prelude

Reverie on Cumberland Homesite #5.

This new end unit townhome is our popular "Prelude" floorplan, which makes entertaining easy with plenty of seating around the gourmet kitchen island, an adjacent sunlit family room that opens to the deck, a separate dining space with a 10-foot ceiling, and an elevator shaft. The gourmet kitchen boasts an over-sized island that's fully equipped with cabinets underneath for optimal storage! Picture yourself sipping coffee on the balcony on a beautiful autumn day! Entertain in your dining area that flows effortlessly off the chef's kitchen equipped with modern quartz-countertop. Upstairs you will find your truly spa like owners retreat and your bright, open master bedroom. The master bathroom is where you can unwind and enjoy your double vanity and large shower with bench seat. Laundry room is conveniently located near master bedroom.

About Reverie on Cumberland Townhomes

Now Selling! Just outside Atlanta, a mere stone's throw from downtown Vinings, you'll discover the perfect blend of southern charm and modern-day sophistication in the gated community of Reverie on Cumberland. In this exciting, yet private swim community, you'll fall in love with the lifestyle as much as the location - just two miles from SunTrust Park and at the heart of an area known for activities, shopping, dining, entertainment and more. Here together, we'll help you create a loft, townhome or single-family home that's a true reflection of your style and passions. Whether inspired by all the activities within your reach or your own imagination, at Reverie on Cumberland, you'll love the possibilities.



CALL TO LEARN MORE AND REQUEST A TOUR TODAY **770-691-0818**

ASHTONWOODS.COM

SQUARE FT.
2,309 sq. ft.

GARAGE



STORIES



BEDROOMS



BATHS



PRICE
\$613,569

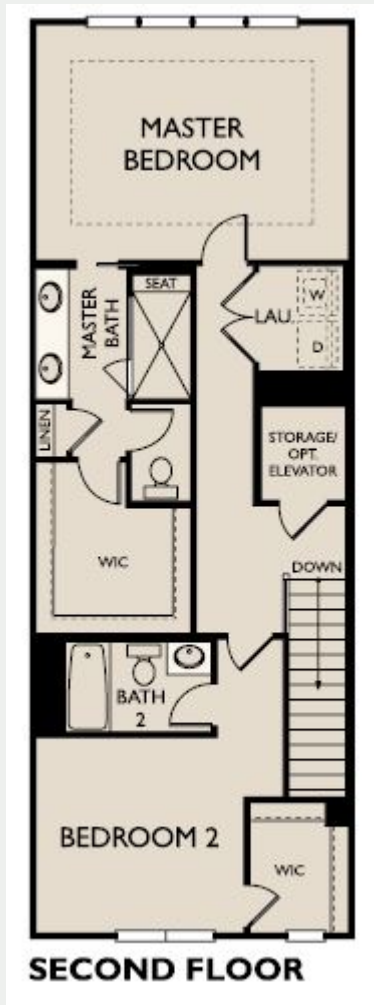
AVAILABLE

FEBRUARY 2022

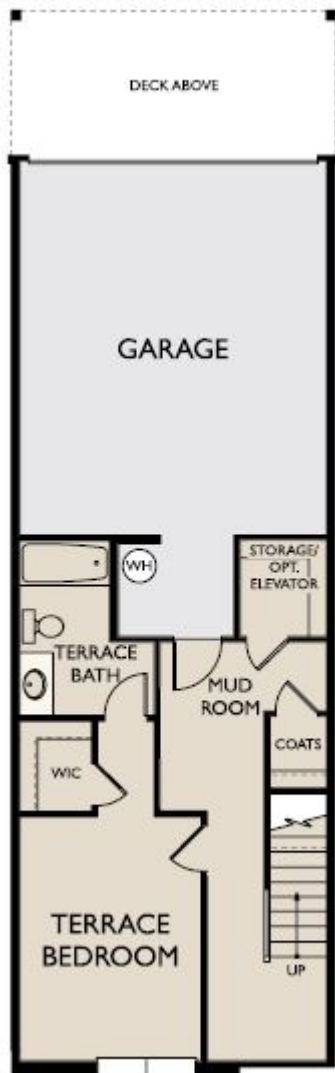
First Floor A



Second Floor A



Terrace A

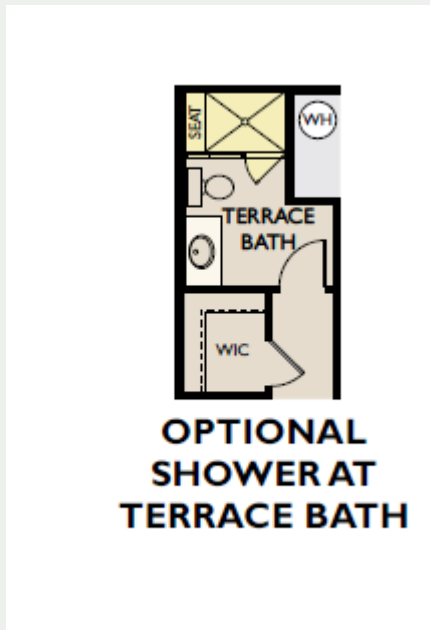


TERRACE LEVEL

Option A



**OPTIONAL
SHOWER AT BATH 2**

Option B

© 2019 Ashton Woods Homes. Ashton Woods Homes reserves the right to change plans, specifications and pricing without notice in its sole discretion. Square footage is approximate and floorplans shown are representative of actual floorplans.. Window, floor and ceiling elevations are approximate, subject to change without prior notice or obligation, may not be updated on the website, and may vary by plan elevation and/or community. Special wall and window treatments, upgraded flooring, fireplace surrounds, landscape and other features in and around the model homes are designer suggestions and not included in the sales price. All renderings, color schemes, floor plans, maps and displays are artists' conceptions and are not intended to be an actual depiction of the home or its surroundings. Basement options are available subject to site conditions. Home site premiums may apply. While we endeavor to display current and accurate information, we make no representations or warranties regarding the information set forth herein and, without limiting the foregoing, are not responsible for any information being out of date or inaccurate, or for any typographical errors. Please see Sales Representative for additional information, including current floor plans. This is not an offer to sell real estate, or solicitation to buy real estate, in any jurisdiction where prohibited by law or in any jurisdiction where prior registration is required, including New York and New Jersey.