

1638 The Parks Drive,
Homesite 142 Pittsboro,
NC, NC 27312

Available
November 2021

SQUARE FT. **PRICE**
3,525 sq. ft. \$615,020

GARAGE **STORIES**
 3  2

BEDROOMS **BATHS**
 5  4



WELCOME TO The Meaghan

Parks at Meadowview Homesite #142

Through the double front doors and expansive foyer, come into the Meaghan's beautiful open plan—perfect for family gatherings and entertaining, and complete with a first floor guest suite. The large gourmet kitchen has a large pantry and butler's pantry pass-through to the formal dining room and is open to the large breakfast area and family room, with plenty of natural sunlight. Outside, you'll find a spacious screened-in porch and grilling deck overlooking a wooded backyard. Upstairs, the owner's suite features a spa-like bath with free-standing tub, large tile shower, and dual vanities; and a huge walk-in closet. A spacious loft and secondary bedrooms—all with walk-in closets are also upstairs.

About Parks at Meadowview

MODEL HOME NOW OPEN!

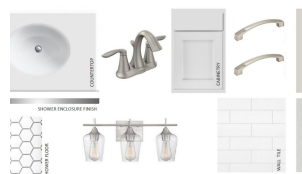
Resting along the wooded, winding roads of Pittsboro, NC and just minutes from Jordan Lake, the well-established community of Parks at Meadowview will bring you an immediate feeling of contentment. The stone and wrought-iron front gates welcome all to become a part of the true community of family here, where the sounds of children's laughter echo through the trees and new neighbors become best friends. Parks at Meadowview by Ashton Woods is also the kind of place where affordability and comfort come hand-in-hand - without sacrificing size or the beauty of an exceptionally designed, personalized home. Large, wooded homesites become the foundation for perfectly crafted homes fitting the needs of families of all shapes and sizes. When you're here, you're home.



AS AT MEADOWVIEW 142- KITCHEN



AS AT MEADOWVIEW 142- MASTER



AS AT MEADOWVIEW 142- SECONDARY



SQUARE FT.
3,525 sq. ft.

GARAGE



STORIES



BEDROOMS



BATHS

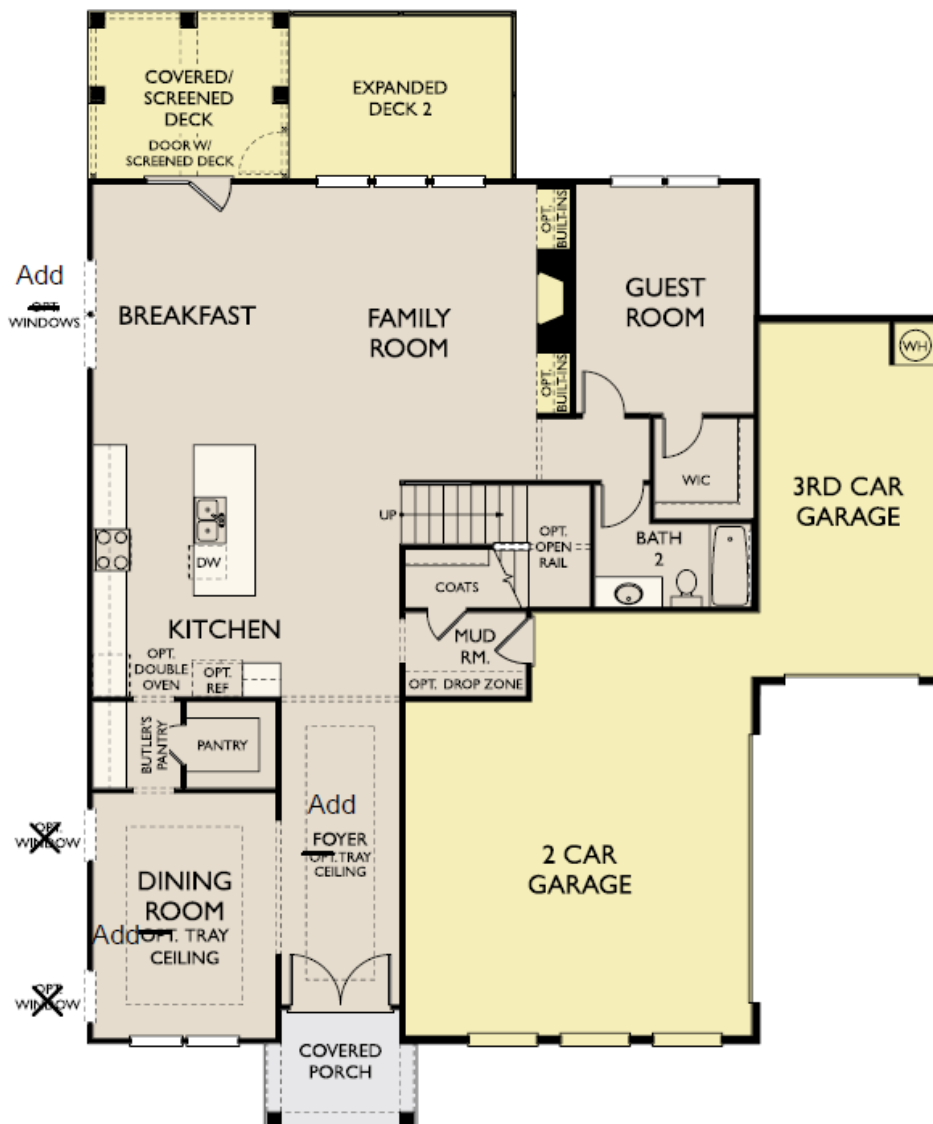


PRICE
\$615,020

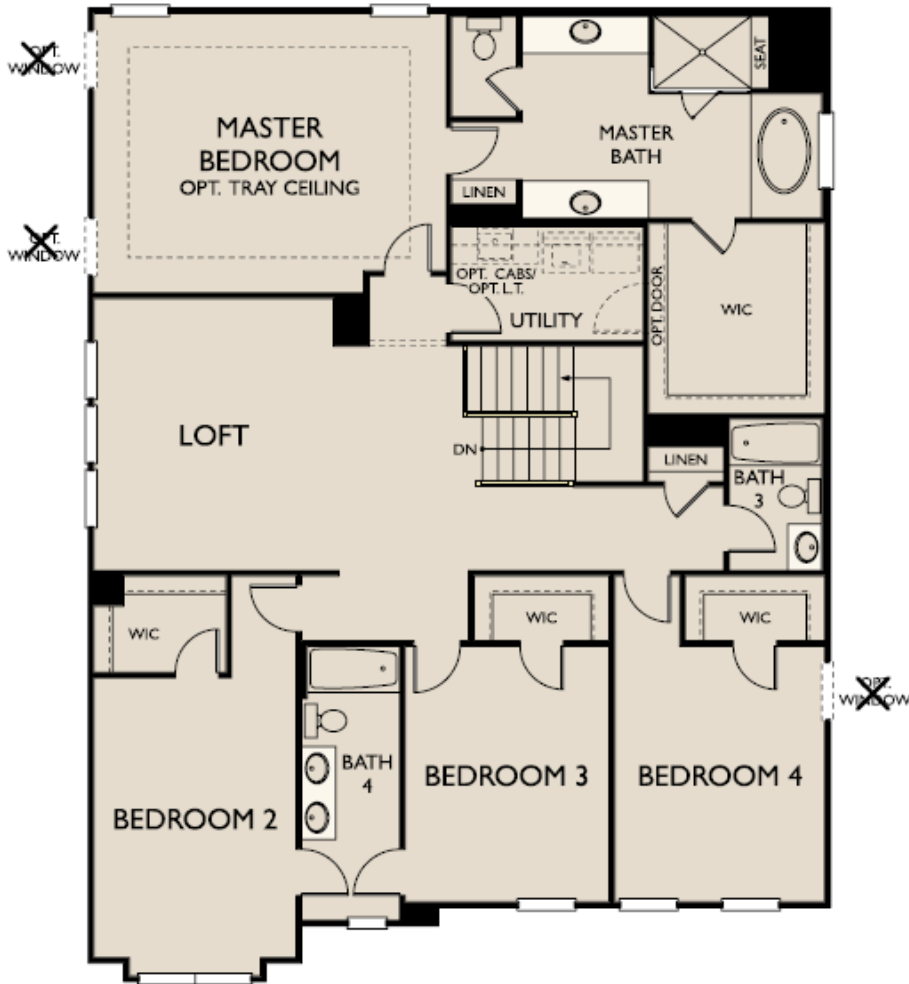
AVAILABLE

NOVEMBER 2021

First Floor A



Second Floor A



© 2019 Ashton Woods Homes. Ashton Woods Homes reserves the right to change plans, specifications and pricing without notice in its sole discretion. Square footage is approximate and floorplans shown are representative of actual floorplans. Window, floor and ceiling elevations are approximate, subject to change without prior notice or obligation, may not be updated on the website, and may vary by plan elevation and/or community. Special wall and window treatments, upgraded flooring, fireplace surrounds, landscape and other features in and around the model homes are designer suggestions and not included in the sales price. All renderings, color schemes, floor plans, maps and displays are artists' conceptions and are not intended to be an actual depiction of the home or its surroundings. Basement options are available subject to site conditions. Home site premiums may apply. While we endeavor to display current and accurate information, we make no representations or warranties regarding the information set forth herein and, without limiting the foregoing, are not responsible for any information being out of date or inaccurate, or for any typographical errors. Please see Sales Representative for additional information, including current floor plans. This is not an offer to sell real estate, or solicitation to buy real estate, in any jurisdiction where prohibited by law or in any jurisdiction where prior registration is required, including New York and New Jersey.