



6806 Prue Road Bldg. 25  
San Antonio, TX 78240

**Available**  
February 2022

**SQUARE FT.**  
1,826 sq. ft.     **PRICE**  
\$346,847

**GARAGE**     **STORIES**  
 2      2

**BEDROOMS**     **BATHS**  
 3      2.5



**WELCOME TO** The Voyager

Charming north facing, two story home featuring a gourmet kitchen with a central island open to the breakfast room and the spacious family room. The upstairs master suite includes a private bath with an oversized shower and a walk-in closet. Two secondary bedrooms with a shared bath and a loft upstairs. Two car garage. Front yard maintenance included with the home.

**About Cypress Trails**

Cypress Trails is located in the heart of the city. A beautiful community conveniently located inside Loop 1604 near the Medical Center and UTSA area. Residents of Cypress Trails will enjoy easy access to the Leon Creek trailway system. Your family will attend the acclaimed Northside ISD. Together, in this beautiful setting, we'll create a home that's a true reflection of your style and your passions. Our design experts will collaborate with you to weave your vision into a personalized design solution.



**SQUARE FT.**  
1,826 sq. ft.

**GARAGE**



**STORIES**



**BEDROOMS**



**BATHS**

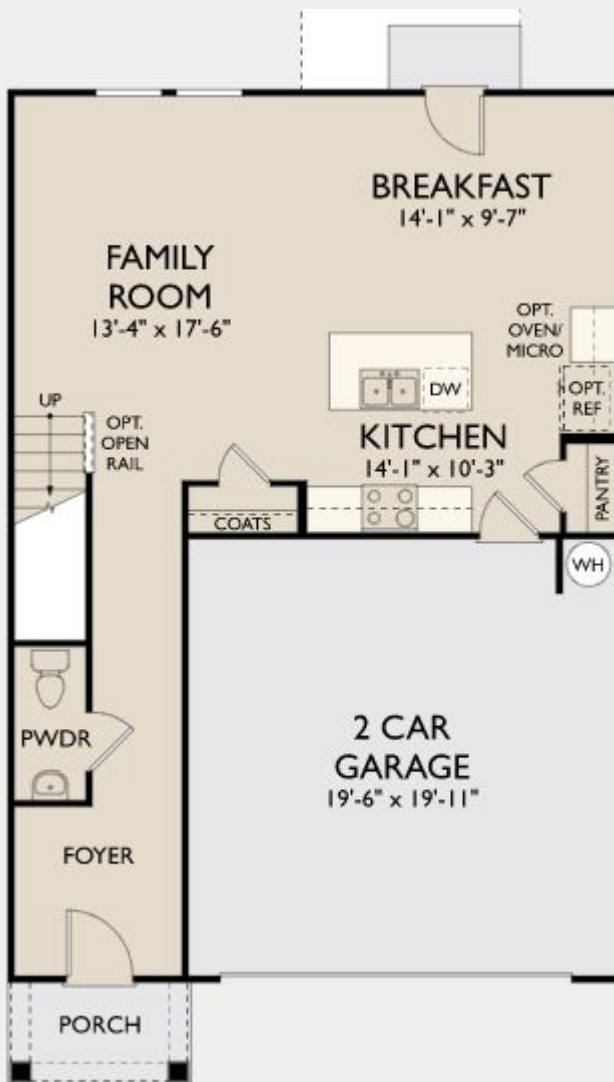


**PRICE**  
\$346,847

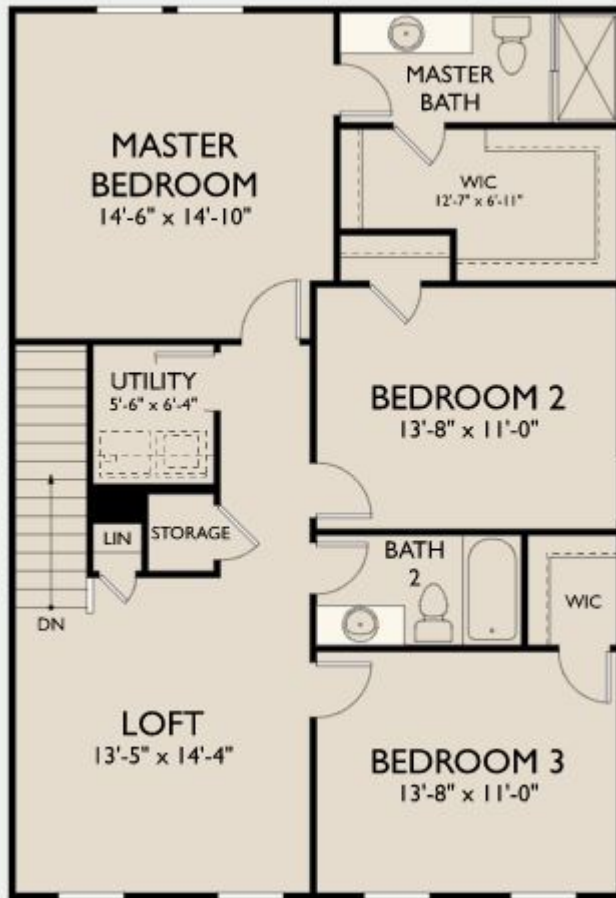
**AVAILABLE**

**FEBRUARY 2022**

### First Floor A



### Second Floor A



© 2019 Ashton Woods Homes. Ashton Woods Homes reserves the right to change plans, specifications and pricing without notice in its sole discretion. Square footage is approximate and floorplans shown are representative of actual floorplans. Window, floor and ceiling elevations are approximate, subject to change without prior notice or obligation, may not be updated on the website, and may vary by plan elevation and/or community. Special wall and window treatments, upgraded flooring, fireplace surrounds, landscape and other features in and around the model homes are designer suggestions and not included in the sales price. All renderings, color schemes, floor plans, maps and displays are artists' conceptions and are not intended to be an actual depiction of the home or its surroundings. Basement options are available subject to site conditions. Home site premiums may apply. While we endeavor to display current and accurate information, we make no representations or warranties regarding the information set forth herein and, without limiting the foregoing, are not responsible for any information being out of date or inaccurate, or for any typographical errors. Please see Sales Representative for additional information, including current floor plans. This is not an offer to sell real estate, or solicitation to buy real estate, in any jurisdiction where prohibited by law or in any jurisdiction where prior registration is required, including New York and New Jersey.