

7709 Alouette Drive  
Austin, TX 78738

**Available**  
April 2022

**SQUARE FT.**  
2,712 sq. ft.     **PRICE**  
\$825,964

**GARAGE**  
 2     **STORIES**  
 2

**BEDROOMS**  
 4     **BATHS**  
 3



**WELCOME TO The Santa Rosa**

Beautiful two-story greenbelt Santa Rosa home with a stucco and stone exterior. You're going to love the natural light that flows throughout this open floorplan. The large kitchen and breakfast area features an oversized island perfect for entertaining. The owner's retreat, as well as guest suite, are located on the first floor. Upstairs you'll find a spacious loft and media room, along with two secondary bedrooms and a full bathroom. Enjoy the privacy of this secluded backyard from the cozy covered back patio. Come take a tour and discover Provence today!

**About Provence 60s**

Close to the serene waters of Lake Travis is the newly built master-planned community of Provence. Here, amid the natural beauty of the Hill Country and close to the work centers of Austin, you'll find a collection of exceptionally designed homes by Ashton Woods. Residents at Provence enjoy an atmosphere of rustic luxury and an amenity-rich lifestyle. Relax with neighbors on sunny afternoons at the pool and pavilion, or bring the kids to the community's parks and playgrounds. Or, get some exercise on the scenic hiking and biking trails. Provence is ideally situated within the award-winning Lake Travis school district and close to shopping and dining at Bee Cave and Lakeway. Whether you're inspired by the expansive Hill Country views or the excitement of nearby Austin, at Provence, you'll love the possibilities.



SQUARE FT.  
2,712 sq. ft.



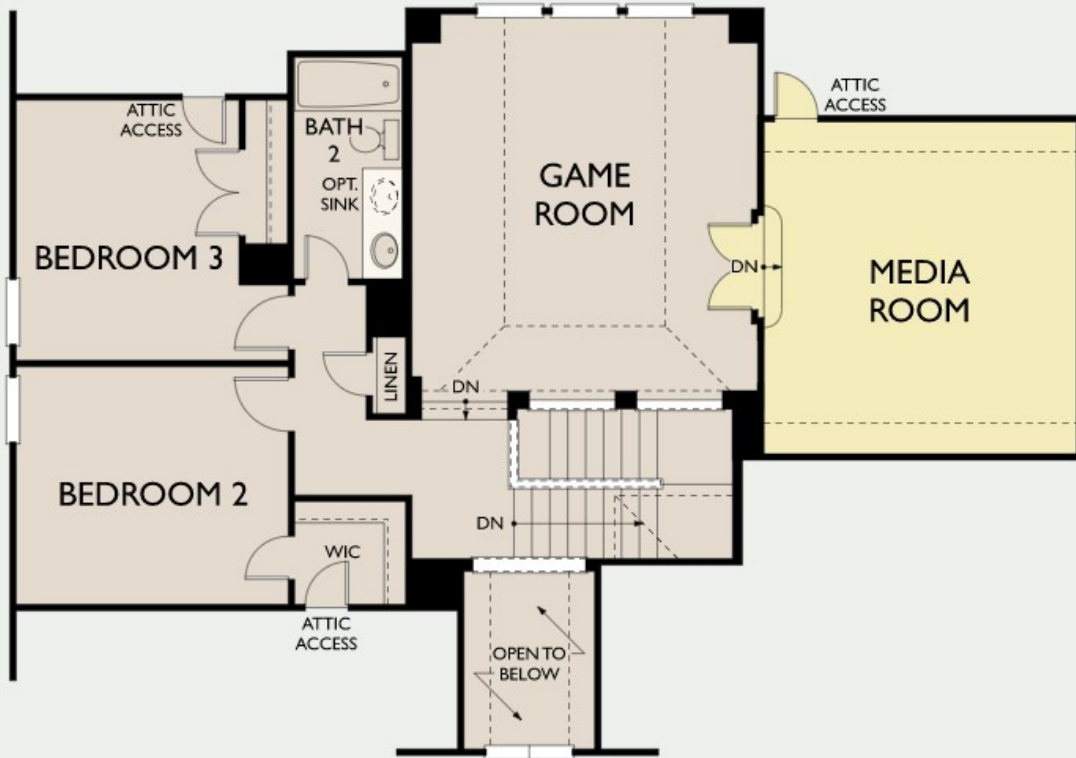
PRICE  
\$825,964

AVAILABLE  
APRIL 2022

### First Floor Options



### Second Floor Options



© 2019 Ashton Woods Homes. Ashton Woods Homes reserves the right to change plans, specifications and pricing without notice in its sole discretion. Square footage is approximate and floorplans shown are representative of actual floorplans.. Window, floor and ceiling elevations are approximate, subject to change without prior notice or obligation, may not be updated on the website, and may vary by plan elevation and/or community. Special wall and window treatments, upgraded flooring, fireplace surrounds, landscape and other features in and around the model homes are designer suggestions and not included in the sales price. All renderings, color schemes, floor plans, maps and displays are artists' conceptions and are not intended to be an actual depiction of the home or its surroundings. Basement options are available subject to site conditions. Home site premiums may apply. While we endeavor to display current and accurate information, we make no representations or warranties regarding the information set forth herein and, without limiting the foregoing, are not responsible for any information being out of date or inaccurate, or for any typographical errors. Please see Sales Representative for additional information, including current floor plans. This is not an offer to sell real estate, or solicitation to buy real estate, in any jurisdiction where prohibited by law or in any jurisdiction where prior registration is required, including New York and New Jersey.